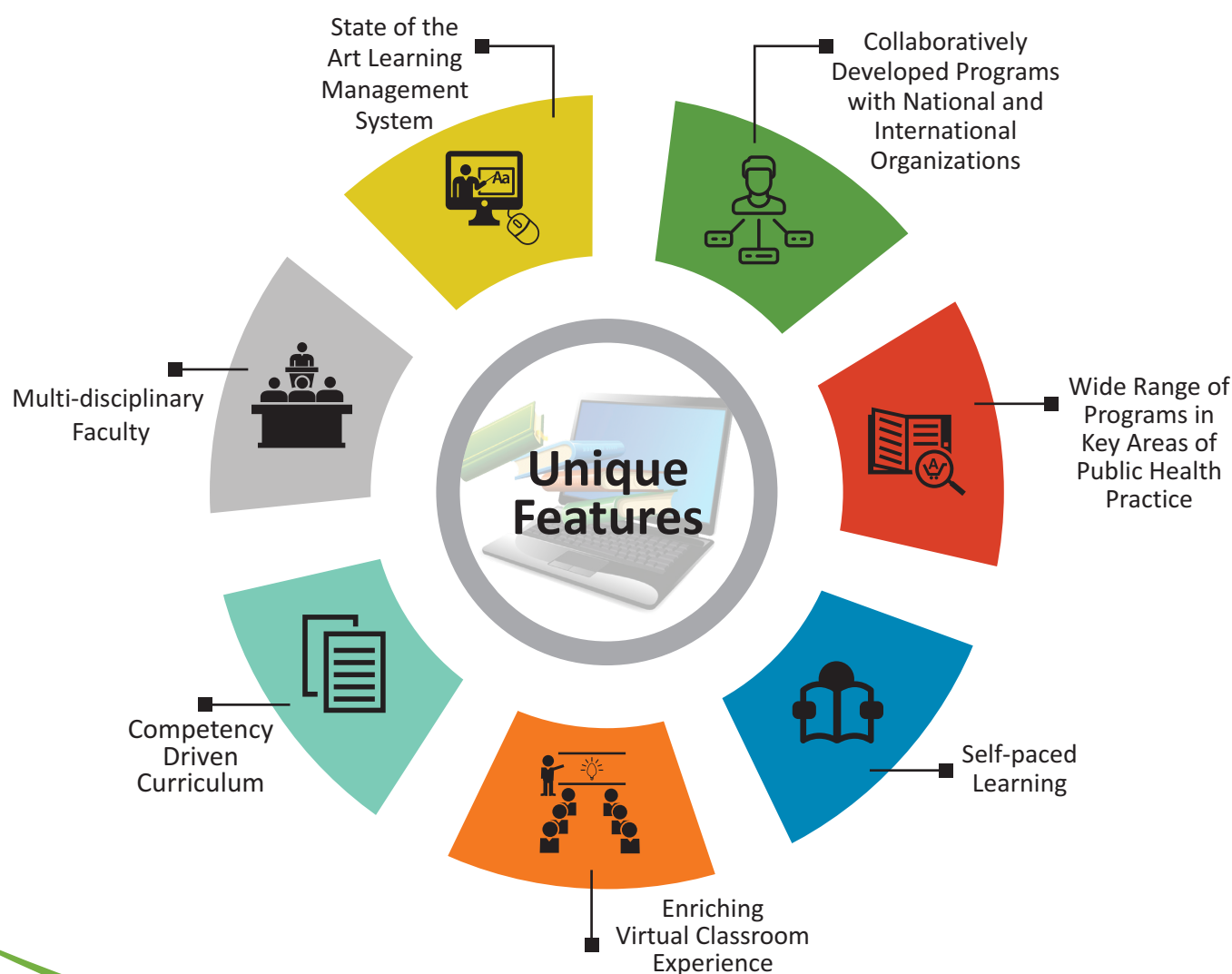


Build a Career in Public Health



eLearning Programs

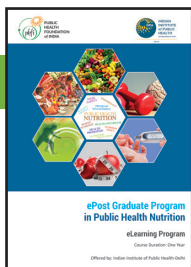
course
training
Skill development
knowledge
recorded lectures
Public Health
Maternal & Child Health
Research Ethics
Capacity Building
Health Economics
GIS
Health
Epidemiology

About Public Health Foundation of India (PHFI) and Indian Institute of Public Health (IIPH)-Delhi

PHFI is a public private initiative that has collaboratively evolved through consultations with multiple constituencies including Indian and international academia, state and central governments, multi & bi-lateral agencies and civil society groups. PHFI is a response to redress the limited institutional capacity in India for strengthening training, research and policy development in the area of Public Health through establishment of Indian Institutes of Public Health, across the country. IIPH-Delhi is one of the five academic institutions under PHFI. The institute is actively involved in conducting academic programs, both on- campus and eLearning.

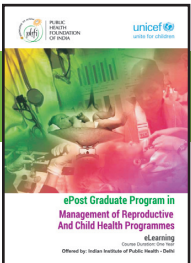
eLearning Programs offered by IIPH-Delhi

ePost Graduate Programs (One year)



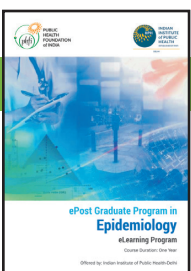
ePost Graduate Program in Public Health Nutrition

The course aims to provide comprehensive training in public health nutrition in a global setting coupled with an exposure to a number of topics and in a range of contexts. The course focuses on the fundamentals of food science and nutrition, epidemiological methods of research, community nutrition and new innovations in/aspects of nutritional science.



ePost Graduate Program in Management of Reproductive and Child Health Programmes

The course aims to develop an in-depth understanding of technical and programmatic issues related to reproductive and child health programmes. It also intends to strengthen the capacity to plan, manage and monitor RCH programmes at the state and district level.



ePost Graduate Program in Epidemiology (Only for Indian Nationals)

The course aims to build a pool of trained public health professionals with a special focus on application of epidemiology in public health.

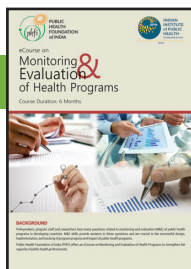


ePost Graduate Program in Health Economics, Health Care Financing and Policy

The course aims to provide a fundamental understanding of key issues in health economics, health care financing, pharmaceutical economics and economic evaluation for public health practice for informed decision making and implementation.

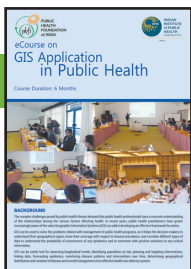
eLearning Programs offered by IIPH-Delhi

eCourses (6 months)



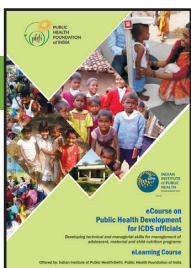
eCourse on Monitoring & Evaluation of Health Programs

The course aims to strengthen the capacity and update current knowledge about monitoring & evaluation of professionals working in the field of public health globally.



eCourse on GIS Application in Public Health

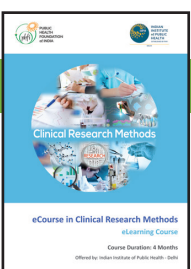
The course aims to provide virtual learning for people working in local enterprise or public sector organisations who require core training and skills development in Geographical Information Systems.



eCourse on Public Health Development for ICDS officials

The course aims to update current knowledge, strengthen the technical capacity on reproductive and child health nutrition and enhance the managerial skills of the service providers and officials working under the ICDS program.

eCourses (3 - 4 months)



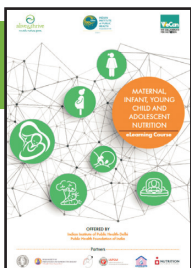
eCourse in Clinical Research Methods

The course aims to provide participants with a multidisciplinary perspective to facilitate their skills in health research. This course will expose them to fundamental concepts and basic analytic methods to cover topics spanning from conceptualization of research idea to dissemination of research findings to fully equip them to carry out original research and report their findings.



eCourse in Research Ethics

The course aims to sensitize members of ethics committees, researchers and students on the ethical principles of research ethics in humans, essentially in the context of public health research and implementation trials.



eCourse in Maternal, Infant, Young Child and Adolescent Nutrition (Only for Indian Nationals)[#]

This course will sensitize participants on the importance of first 1000 days of life with specific emphasis on the critical importance of maternal nutrition, breastfeeding, complementary feeding, adolescent nutrition, health systems protocols and evidence-based approaches for quality MIYCAN programming.

Eligibility Criteria*

- Applicants with graduate / post-graduate degree in medicine, AYUSH, dental, nursing, pharmacy, health sciences, physiotherapy, occupational therapy, natural / life sciences, management, social sciences, social work or any equivalent qualification.
- Applicants and researchers currently engaged in public health related activities such as health professionals working with directorates of health services, central and state governments, officials engaged in health services at national, state and district level government institutions, or working in health organizations.
- Applicants engaged in health services with National Health Programmes like National Health Mission, Ayushman Bharat, & other programs.

*Please refer to website for more details on program specific eligibility criteria.

System Requirements

- **Internet Bandwidth:** 1 Mbps
- **Processor:** Intel Pentium 4 or equivalent and above
- **RAM:** 512 MB and above (1 GB recommended)
- **Supported Browsers:** recent Google Chrome, recent Mozilla Firefox, Safari 6, Internet Explorer 9
- **Supported Operating Systems:** Windows XP, Windows Vista, Windows 7 or later, Mac OS, Linux, iOS, Android, etc.
- Headset with microphone (web camera - optional)

Teaching and Course Delivery Methodology

All eLearning programs utilizes a blended online teaching/ learning techniques. The basic structure includes a combination of interactive online computer-based sessions, online virtual lectures, online assessments and examinations. eLearning sessions will be conducted by designated faculty members with students logging in from their location through their personal laptops/computers. The courses are offered using PHFI's Learning Management System (LMS). The greatest advantage of eLearning is that students can learn at their own pace.

Course Fee

Programs/Courses	For Indian and South Asian Nationals**	Other International Candidates
ePost Graduate Programs (1 year)	36,000 INR	1200 USD
eCourses (6 months)	18,000 INR	600 USD
eCourses (3-4 months)	9,000 INR	330 USD

* Please check the website for course fee details

** South Asian countries include Afghanistan, Bangladesh, Bhutan, India, Maldives, Nepal, Pakistan & Sri Lanka

For program related queries, please contact:

Senior Program Officer (eLearning)

Indian Institute of Public Health-Delhi

Public Health Foundation of India

Plot No. 47, Sector No. 44, Institutional Area, Gurugram-122002, Haryana, India

Tel: +91 124 4722900; Email: dl@iiphd.org

For more information & online application, please visit: <https://cdl.phfi.org>

Website: <https://phfi.org/iiph-delhi/elearning-programs/>

