



**icmr** **NIOH**  
INDIAN COUNCIL OF  
MEDICAL RESEARCH  
NATIONAL INSTITUTE OF  
OCCUPATIONAL HEALTH



**PUBLIC  
HEALTH  
FOUNDATION  
OF INDIA**

3-day Workshop on  
**Occupational Health Program: Care & Compliance of Unorganized Sector  
Worker's Perspective for the Primary Healthcare Professionals  
(OHP-CAPH)**

**6<sup>th</sup> - 8<sup>th</sup> March 2020**

*"International Labour Organization is the Technical Partner"*

**Last Date of Enrolment:  
15<sup>th</sup> February 2020**



**OHP-CAPH**  
**OCCUPATIONAL HEALTH PROGRAM**  
Care & Compliance of Unorganized Sector Workers Perspective for Primary Healthcare Professionals

## BACKGROUND

Occupational health is defined as the highest degree of physical, mental and social well-being of workers in all occupations. It is the branch of healthcare which deals with all aspects of health and safety at the workplace. It lays strong emphasis on the prevention of hazards at a primary level.

As of 2011, a total of 465 million Indians were employed. However, only 6% of men are known to be covered under existing health & safety legal framework. (As per Ministry of Labour, Govt. of India)

Awareness of occupational diseases is found to be low across India and its reporting is not very consistent. Factors influencing this issue include lack of reliable diagnosis, follow-ups and apparent shortage of occupational health specialists in the country. Moreover, lack of trained occupational health professionals with deficient institutions, qualification courses, training modules, infrastructure, facilities and budgetary provisions make the implementation of legislation a challenge. There is low priority and spending on public health, which reflected in the field of occupational health as well. Also, there is a lack of awareness about the occupational health issues among all the stakeholders.

NIOH and PHFI with the mandate to strengthen the system's capability have joined hands for the genesis and development of this unique program on Occupational Healthcare Program for primary care physicians. This is first of its kind of workshop where two leading organizations in the field of occupational health and public health have collaborated to formulate, develop and execute such program in mentioned field with their vast knowledge, expertise and experience in the respective fields.

## Public Health Foundation of India (PHFI)

The Public Health Foundation of India (PHFI) is a public private initiative that has collaboratively evolved through consultations with multiple constituencies including Indian and International academia, state and central governments, multi & bi-lateral agencies and civil society groups. PHFI is a response to redress the limited institutional capacity in India for strengthening training, research & policy development in the area of public health.

*For more information, kindly visit: [www.phfi.org](http://www.phfi.org)*

## ICMR- National Institute of Occupational Health (NIOH)

The NIOH is the premier institute, under the aegis of the Indian Council of Medical Research (ICMR) under the Department of Health Research, Ministry of Health and Family Welfare, Govt. of India. The Institute functions as a WHO Collaborative and Reference Centre for Occupational Health. Since its inception it is devoted to the cause of working class of people and aims to provide "Occupational Health" to the workers engaged in all occupations and minimize deterioration of workplace environment through: Research, Education, Service and render assistance to the regulatory authorities to take necessary policy decisions for the control of occupational health related problems.

*For more information, kindly visit: [www.nioh.org](http://www.nioh.org)*

## International Labour Organization (Technical Partner)

The International Labour Organization (ILO) is the United Nations agency for the world of work. It sets international labour standards, promotes rights at work and encourages decent employment opportunities, the enhancement of social protection and the strengthening of dialogue on work-related issues. The ILO has a unique structure, bringing together governments, employers' and workers' representatives. The ILO has 187 member States and is one of the oldest UN agencies. The ILO's Secretariat has its headquarters in Geneva, Switzerland, and a global network of technical experts and field offices in more than 40 countries. The main aims of the ILO are to promote rights at work, encourage decent employment opportunities, enhance social protection and strengthen dialogue on work-related issues.

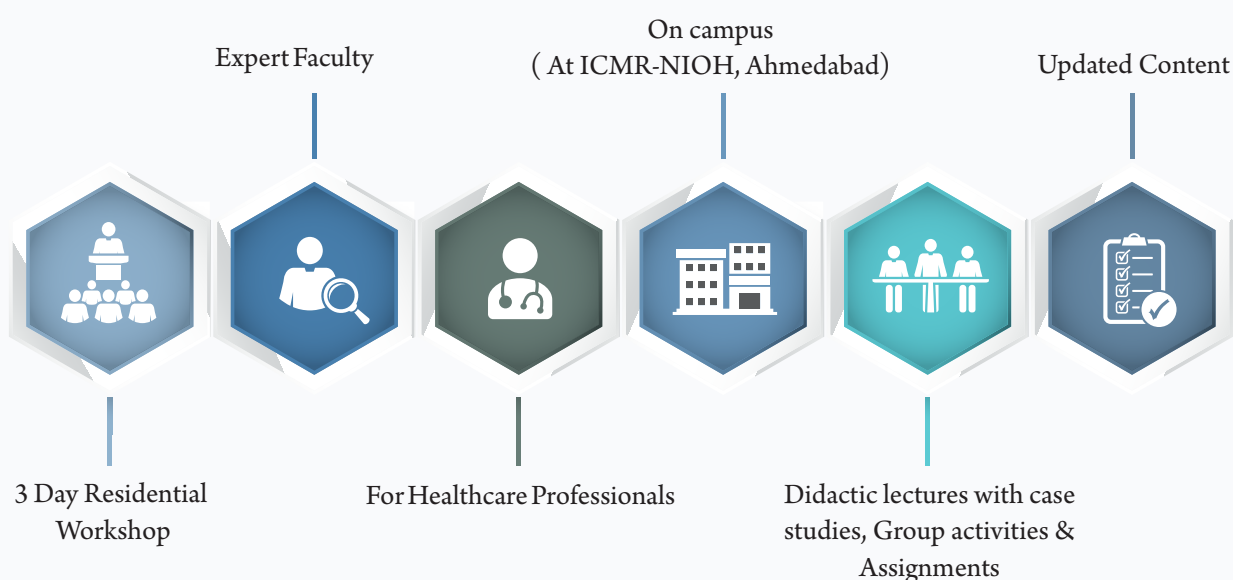
*For more information, kindly visit: [www.ilo.org](http://www.ilo.org)*

## COURSE OBJECTIVES



- To improve the treatment along with safety outcomes for patients by serving as an evidence based guidance for primary care physicians along with the allied health professional in clinical decision making in risk assessment, diagnosis, prognosis and management of occupation related disease or health.
- To translate and transfer emerging evidence from clinical research to clinical practice.

## SALIENT FEATURES OF THE WORKSHOP



## TEACHING AND TRAINING METHODOLOGY

The program has strong emphasis on adult mixed learning methods

- lectures
- Case studies
- Didactic
- Group work
- Experience sharing

## COURSE MODULES



## COURSE FEES

For enrolment in the certificate program, the completed application form with a course fee of INR **23,600/-** [inclusive of 18% GST (A nominal charge for boarding & lodging should be payable to ICMR-NIOH Ahmedabad directly during a 3 day residential workshop)] is to be submitted by either of the following two options:

- Demand Draft in favour of "Public Health Foundation of India" payable at New Delhi. The complete application form along with DD and supporting documents should be submitted to Program Secretariat - OHP, Public Health Foundation of India, Plot No. 47, Sector 44, Institutional Area, Gurgaon-122002, India.
- Online Payment through NEFT:  
PUBLIC HEALTH FOUNDATION OF INDIA  
Account Branch :HDFC BANK LIMITED  
Address :H-7, GREEN PARK EXTENSION, NEW DELHI  
Account No : 50100254381662  
RTGS/NEFT IFSC : HDFC0000586

For more information kindly visit: [www.occupationalhealthprogram.org](http://www.occupationalhealthprogram.org) or Email at: [occupationalhealthprogram@phfi.org](mailto:occupationalhealthprogram@phfi.org)

### Public Health Foundation of India

Dr. Shivangi Vats, Program Manager  
[Email-shivangi.vats1@phfi.org](mailto:Email-shivangi.vats1@phfi.org)  
Ph: +91 124 4781400 | Ext: 4515, 4583, 4573  
Plot No. 47, Sector 44, Gurgaon-122002,  
Haryana, India  
Web: [www.phfi.org](http://www.phfi.org)

### ICMR- National Institute of Occupational Health

Dr. Rakesh Balachandar, Scientist-D  
Division of Clinical Epidemiology  
[Email-Balachandar.rakesh@gmail.com](mailto:Email-Balachandar.rakesh@gmail.com)  
Mob. No.+91-9535228260  
ICMR-National Institute of Occupational Health,  
Meghani Nagar, Ahmedabad-380016, Gujarat  
Web: [www.nioh.org](http://www.nioh.org)

