

भारतीय
जन स्वास्थ्य
प्रतिष्ठान



PUBLIC
HEALTH
FOUNDATION
of INDIA

Public Health Foundation of India (PHFI)

Knowledge | Action | Impact | Equity

Working Towards A Healthier India

Affordable Health Technologies Developed by PHFI: An Overview



MITH.AI

Mass Modular Integrated Transformational Health with Artificial Intelligence



Innovative C3 (Comprehensive, Convergent, Customised) Primary Health Care @ Home Platform

contact: s.munuswamy@phfi.org



Contents



1 Hand Held Device



Box Inside



8 Temp Controlled Boxes



36 Samples / Box



500-800 Vaccine Dose / Box

1000-1500 Med Dose / Box

Inputs **140**

- Disease (75)
- Disability (15)
- Nutrition (10)
- WASH (15)
- Socio De Eco (25)

Outputs **850^**

- Risk Profile (^)
- Social Benefits (150)
- Health Promotion (500)
- Prophylactic Medicines (30)
- First Line Treatment (100)
- Telemedicine (^)
- Facility Referral (^)
- Livelihood Guidance (100)
- Requirement Prediction (^)
- Service Optimization (^)

Outcomes

@ Home Comprehensive Real Time Universal Primary Health Care: For normal people: Screening, grading, providing health promotion information; For high risk or at disease people: surveillance screening, conducting point of need diagnostics tests, collecting samples for further diagnostics' tests, providing prophylactic or first level of treatment, follow up care post treatment, connecting to facilities for secondary/ tertiary care.

Specific Conditions/ micro services Include: Maternal Health: Pregnancy Risk Assessment; Pregnancy Counselling; Antenatal Care; Post Natal Care; Iron and Folic Acid Supplementation; Child Health: Newborn care; Infant care; Under 5 years care (IMCI); Vitamin Supplementation; Immunization/ vaccination services; Family Planning and Contraception guidance; First Aid, Injury and Wound Management; Adolescent Health Care — Anemia Screening, Fe Supplementation; Hygiene Counselling; School Health care; Deworming Seasonal; Communicable disease management: vector borne conditions; tuberculosis; neglected tropical diseases — Screening, sample collection, management; Non-Communicable disease management; Mental Health Management; ENT and Dental management; Healthy lifestyle promotion; Oral Hygiene screening and promotion; Syndromic (IDSP) surveillance; Promotion of medicinal herbs for health life.

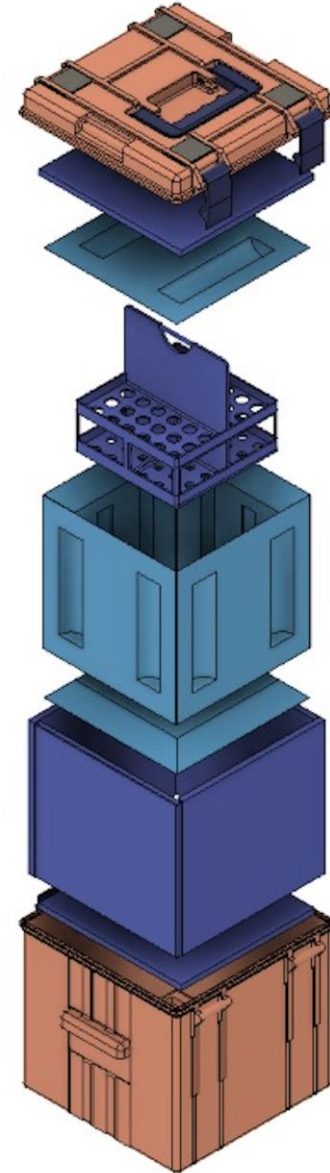


MITH.AI

Mass Modular Integrated Transformational Health with Artificial Intelligence



Box Inside & Outside



Temperature controlled storage box (for vaccines etc.) for maintaining 2-8degrees





MITH.AI

Mass Modular
Integrated
Transformational
Health with
Artificial
Intelligence



Step 1: Health Facility to nearest road head on pick up based drone port

Step 2: Last mile drone delivery to remote hard to reach village - payload recieved by health worker

Innovative Complete Primary Health Care @ Home Platform/ Package

contact: s.munuswamy@phfi.org



DREAM - H



36



1250



850



VLOS/ EVLOS
with 10-15 Kg
Multi -Payload
Multi - Temperatur
Controlled Boxes

Sky Bridge: Last mile delivery of medicines and vaccines



SKY BRIDGE



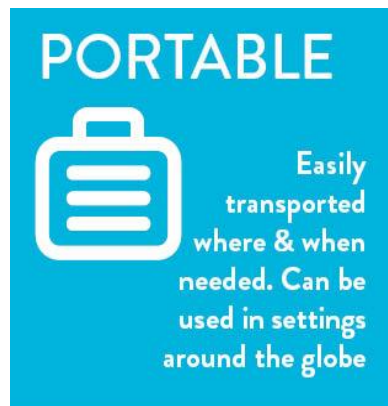


Point of Care Technology: Wi-Fi -enabled
integrated Primary healthcare delivery device
that works with an android device



Swasthya Sahayak

- Wi-Fi -enabled integrated Primary healthcare delivery device that works with an android device
- Equipped with various applications to provide all the required services and multiple diagnostic tests
- Intended for use by the frontline health workers in resource limited settings to facilitate their job without additionally burdening them
- Conforms to NDHB guidelines





Tests Available on Swasthya Sahayak (SS)

- Blood Pressure
- Body Temperature
- Pulse oximetry
- Urine Protein
- Urine Sugar
- Blood Glucose
- Hemoglobin
- Malaria
- Pregnancy
- Hepatitis B
- Typhoid
- Dengue
- Syphilis
- HIV

How does SS address an unmet need?



- Mere availability of health facilities may not necessarily convert to improved utilization rates
- Poor availability & access leads to high OOP and ultimately poor outcomes

Swasthya Sahayak Pro

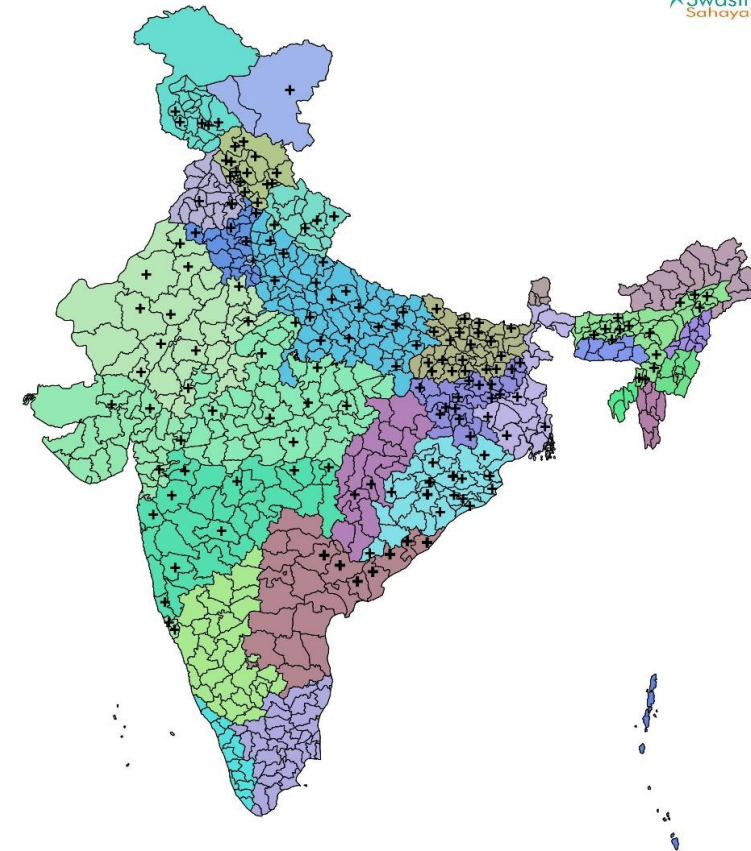
- ECG (12 lead)
- HbA1c
- Lipid Profile
- Kidney Function Test
- Urine creatinine, micro albumin
- In addition to all tests in SS Basic



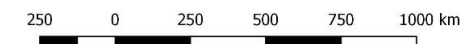
**Specifically designed to focus on
next level of care**

Swasthya Sahayak Deployments

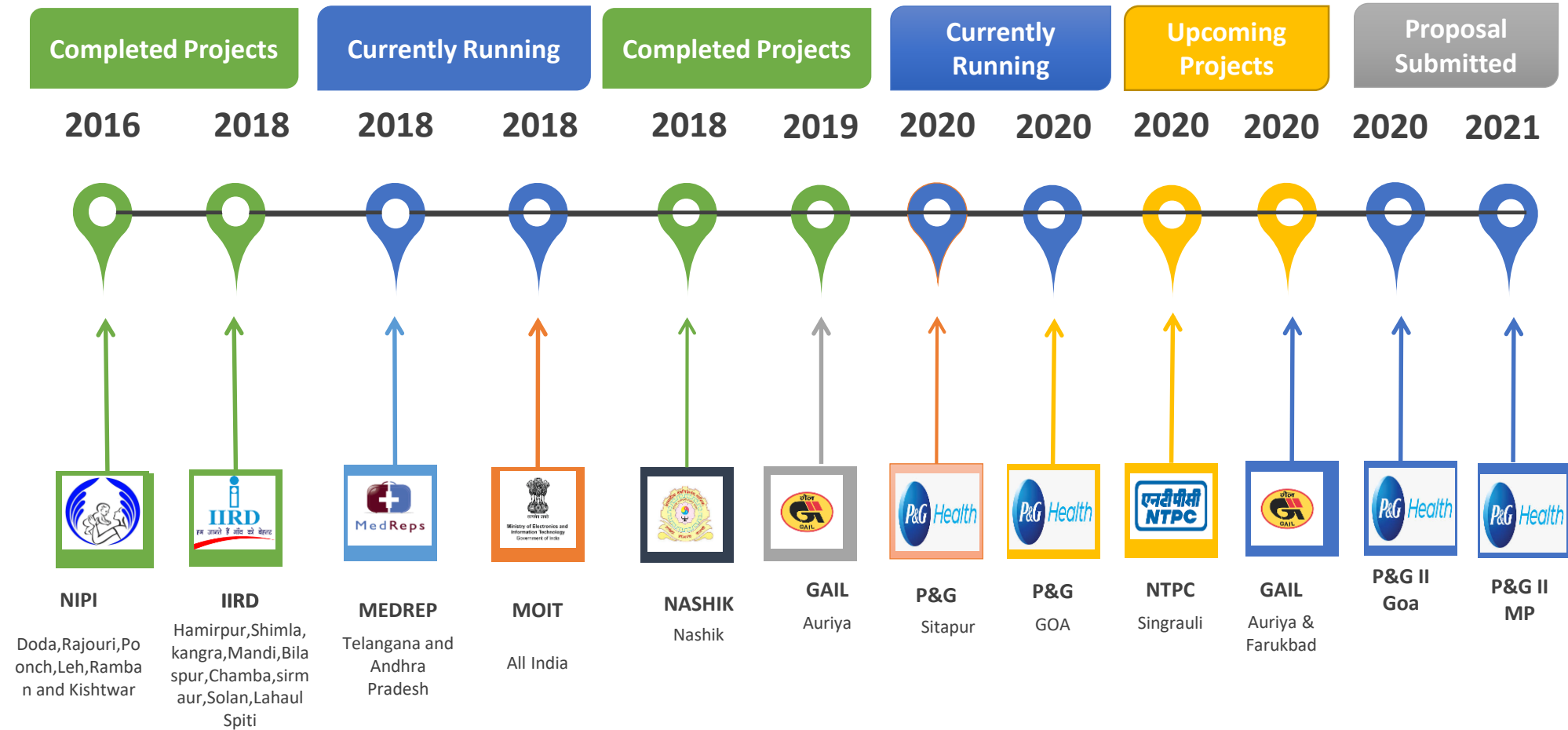
- Impacted, more than 6500 villages
- Provided service to more than 10,00,000 beneficiaries
- More than 1100 happy users
- Conducted 1,50,000 tests



# Project name	State	Total No of user	Total Village coverage	Total no of Diagnostics	Total no of patients registers
Total		1135	6734	76065	170640



Swashya Sahayak Journey-2014-2021



Swashya Sahayak Training



Accolades



Our Solution being presented to **Sh. Narendra Modi**,
Hon. Prime Minister of India at Global Call to Action Meet, 2015

Our Project being launched by Hon Union Minister for Women &
Child Development **Ms. Smriti Irani** & Hon CM **Dr. Pramod
Sawant** in Goa Feb 2020



Digisahayam – An Assisted Telemedicine Solution





Digisahayam

Digisahayam is an initiative that aims to improve access to quality healthcare through bridge personnel trained in providing assisted tele-medicine solutions

Barriers in telemedicine today	Our Solution
Literacy, language or technological barriers among patients	Trained healthcare workers connect, convey findings, facilitate doctor-patient interactions and also prevent wasteful visits
Lack of good clinical history, physical examination findings and laboratory parameters for physicians	Trained healthcare workers collect history, perform physical examination and carry out lab investigations before initiating tele-consultation, thereby saving time and improving quality of care
Multiple innovations –no inter-operable system single platform	The PHFI telemedicine platform embeds electronic health records, PoC diagnostics, in-built e-CDSS & numerous state-of-the-art digital health technologies



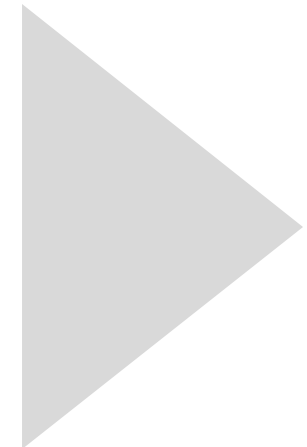
Upscaling skills of health workers in providing assisted telemedicine



Improving quality of care through point of care diagnostics and electronic clinical decision support systems



Real time monitoring and feedback mechanisms that assure quality standards



Improving access to primary and tertiary care through trained personnel

Reducing the need of follow up visits to health facilities



Digital Health Technologies



M-Power

Electronic Clinical
Decision Support
System



Swasthya Sahayak

Point-of-Care Diagnostic
Device



Eko Steth

Digital Stethoscope



Minnray

Paired remotely controlled HD camera

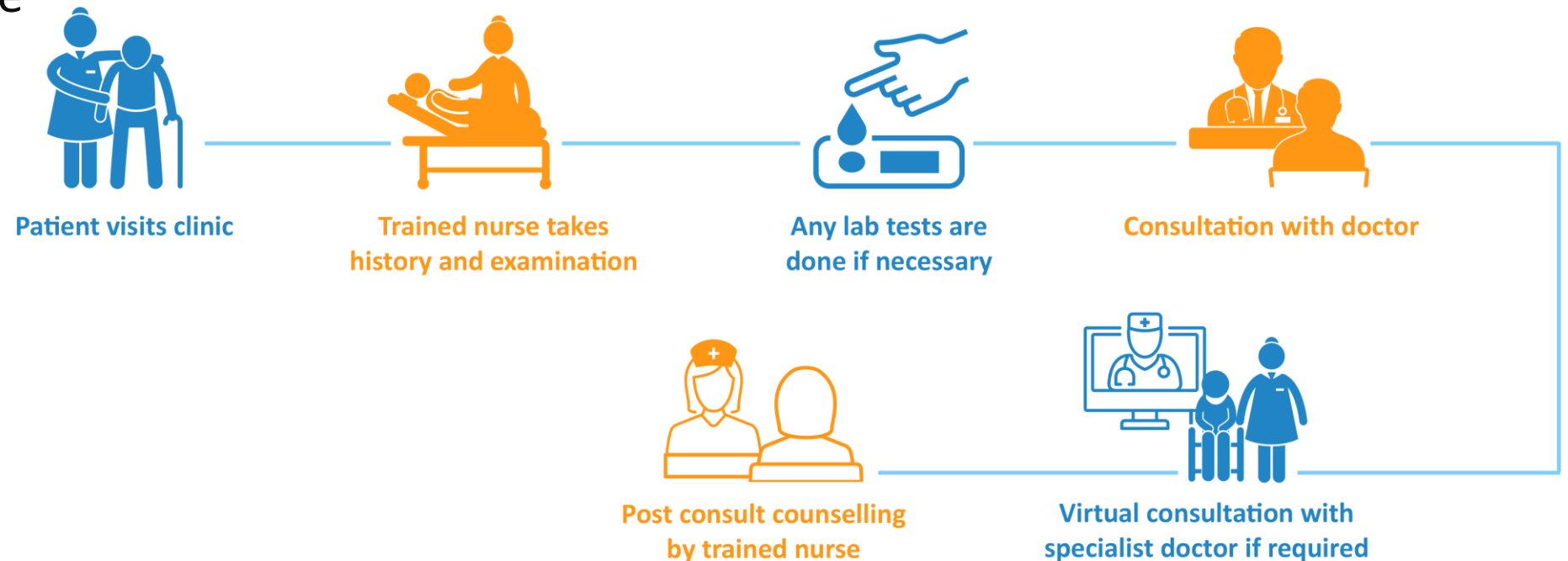


KardioScreen

FDA approved Cloud-
based 6-12 lead
portable ECG

Designated Telemedicine Centre (TMC)

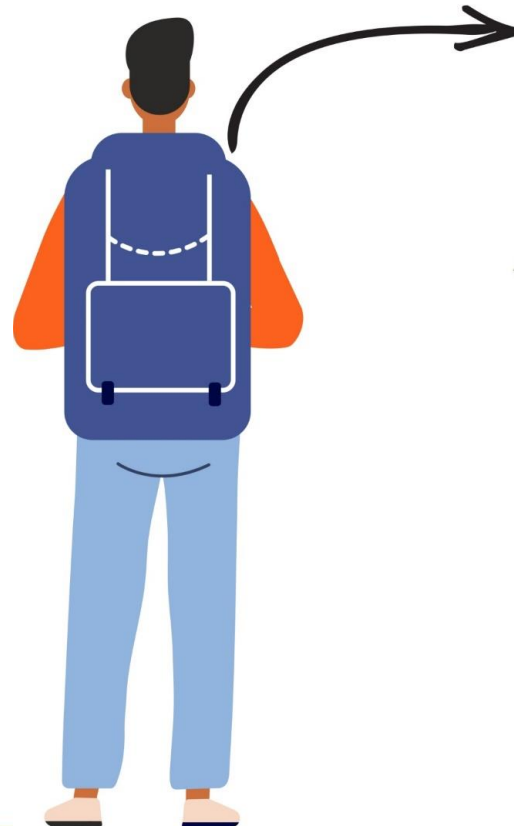
- The TMC is run by a trained nurse and lab-technician that provide assisted telemedicine solutions under the supervision of a project quality assurance officer
- General physician, specialist as well as super-specialist tele-consultations are made available



On-foot Telemedicine Assistance

Telemedicine Assistant – for small populations with less than 1000 or 1/1000 population

Backpack will contain:



Weighing machine



Tablet



Swasthya Sahayak



Measuring Tape

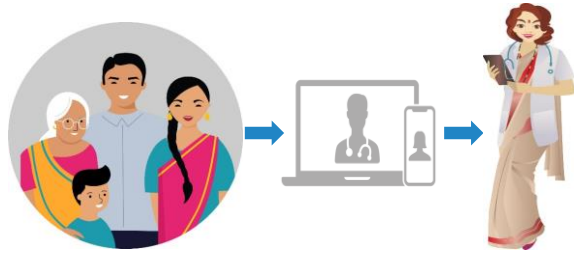


Digital Stethoscope



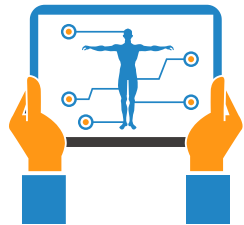
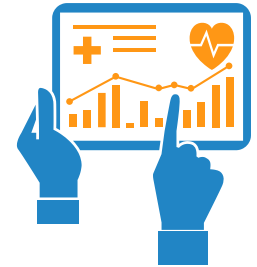
Kardio Screen

Potential Impact



Bridge the gaps between community, technology and digital healthcare through trained personnel

Continuity of care and longitudinal health data through use of inbuilt electronic health records



Create an innovative model for health service delivery that enhances sustainability, accessibility & affordability of care

Reduce indirect healthcare costs related to travel and loss of daily wages





Thank You